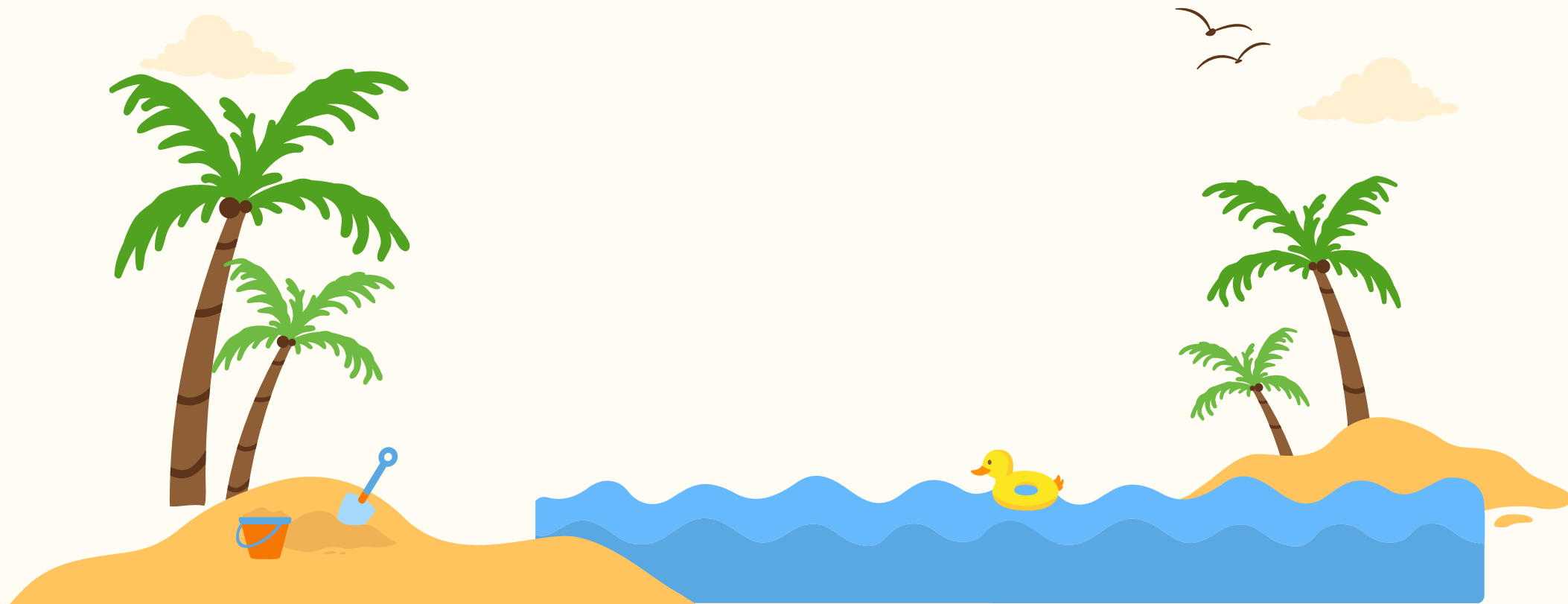


ESCAPE

THE PIÑA COLADA SONG

DRAMATURGY PRESENTATION



WHERE ARE WE GOING?

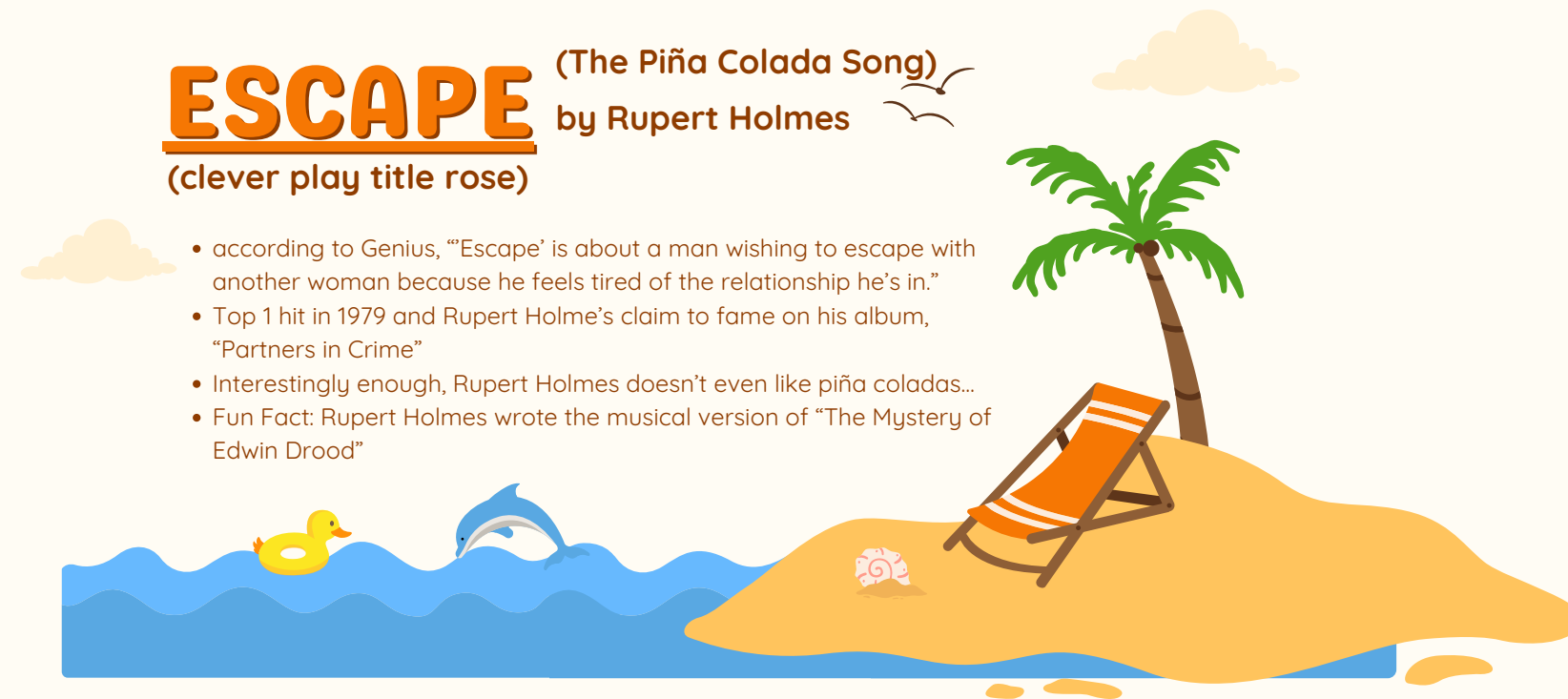


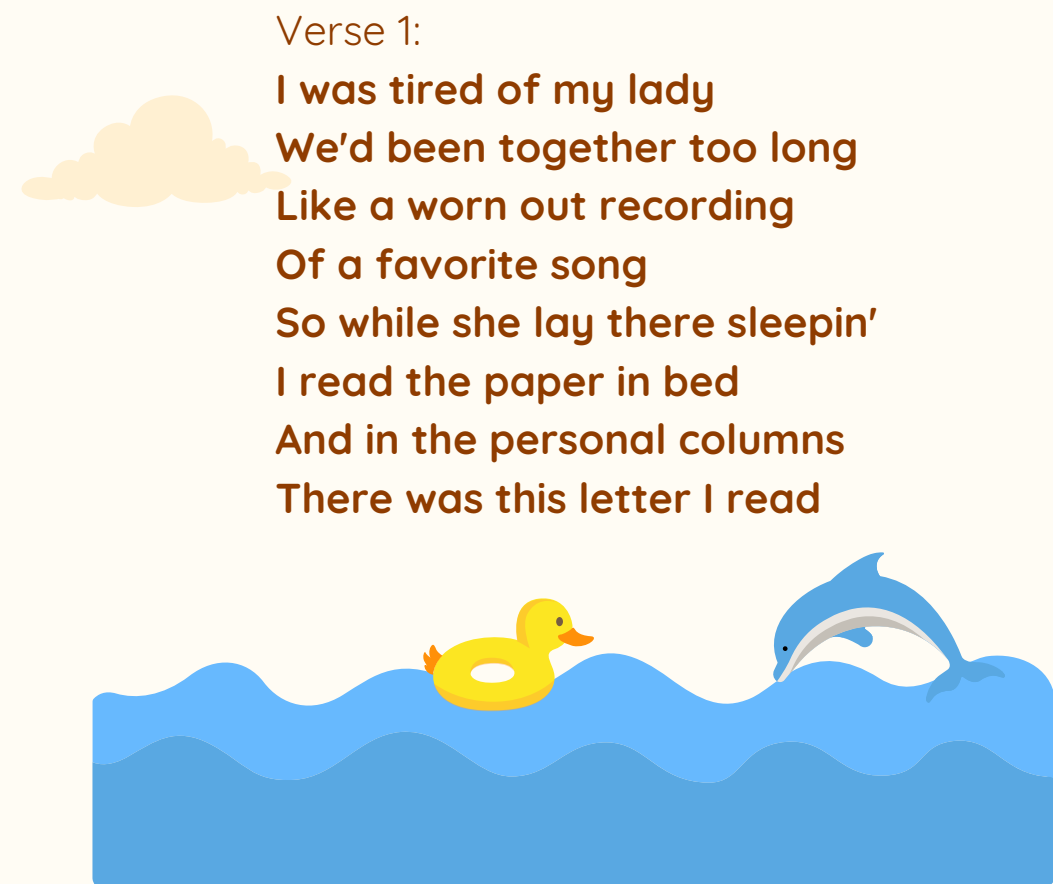
ESCAPE

(The Piña Colada Song)
by Rupert Holmes

(clever play title rose)

- according to Genius, “‘Escape’ is about a man wishing to escape with another woman because he feels tired of the relationship he’s in.”
- Top 1 hit in 1979 and Rupert Holme’s claim to fame on his album, “Partners in Crime”
- Interestingly enough, Rupert Holmes doesn’t even like piña coladas...
- Fun Fact: Rupert Holmes wrote the musical version of “The Mystery of Edwin Drood”





Verse 1:

I was tired of my lady
We'd been together too long
Like a worn out recording
Of a favorite song
So while she lay there sleepin'
I read the paper in bed
And in the personal columns
There was this letter I read

ESCAPE

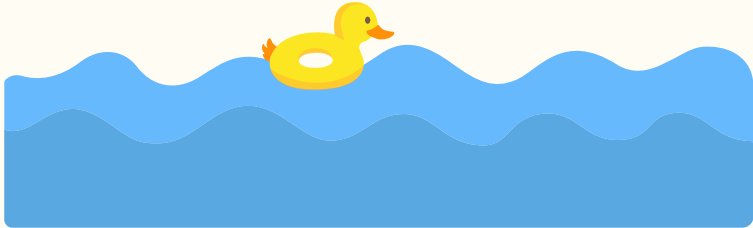
(The Piña Colada Song)

by Rupert Holmes

If you like piña coladas
And gettin' caught in the rain
If you're not into yoga
If you have half a brain
If you like makin' love at
midnight
In the dunes on the cape
Then I'm the love that you've
looked for
Write to me and escape

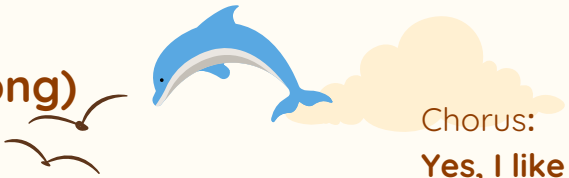


Verse 2:
I didn't think about my lady
I know that sounds kinda mean
But me and my old lady
Had fallen into the same old
dull routine
So I wrote to the paper
Took out a personal ad
And though I'm nobody's poet
I thought it wasn't half bad



ESCAPE

(The Piña Colada Song)
by Rupert Holmes



Chorus:
Yes, I like piña coladas
And gettin' caught in the rain
I'm not much into health food
I am into champagne
I've got to meet you by
tomorrow noon
And cut through all this red
tape
At a bar called O'Malley's
Where we'll plan our escape

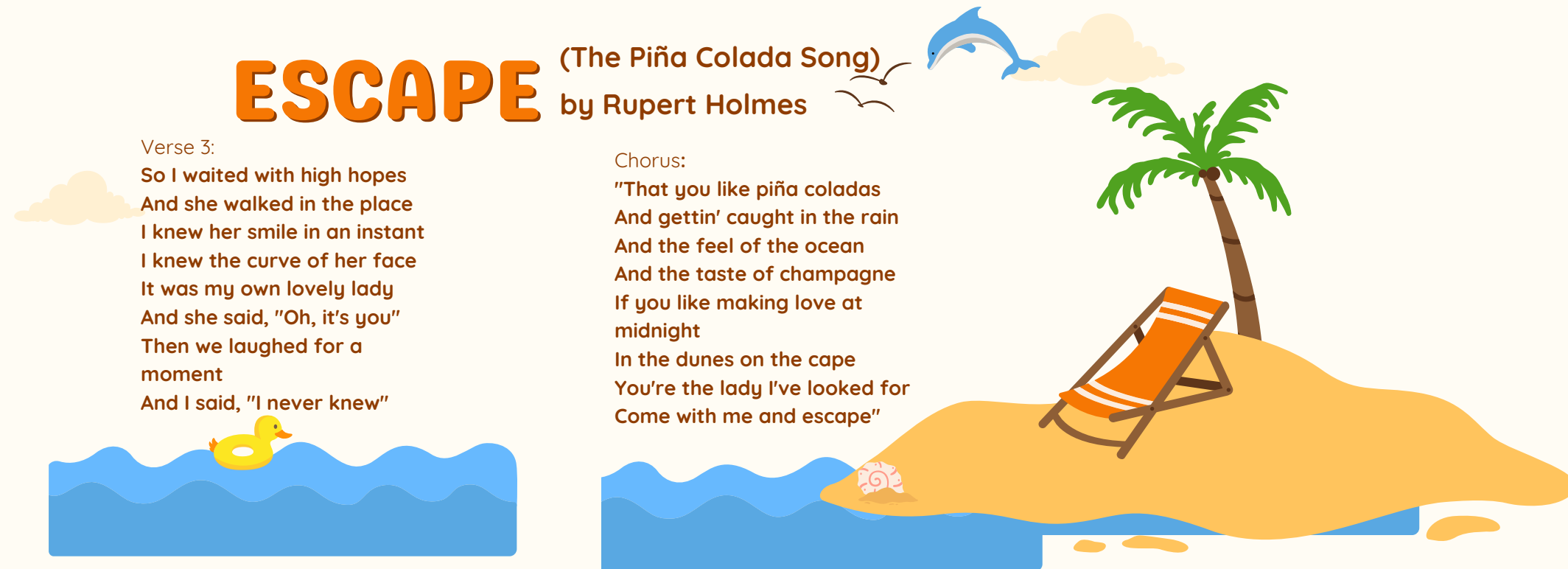


ESCAPE

(The Piña Colada Song)
by Rupert Holmes

Verse 3:

So I waited with high hopes
And she walked in the place
I knew her smile in an instant
I knew the curve of her face
It was my own lovely lady
And she said, "Oh, it's you"
Then we laughed for a
moment
And I said, "I never knew"



Chorus:

"That you like piña coladas
And gettin' caught in the rain
And the feel of the ocean
And the taste of champagne
If you like making love at
midnight
In the dunes on the cape
You're the lady I've looked for
Come with me and escape"

ESCAPE

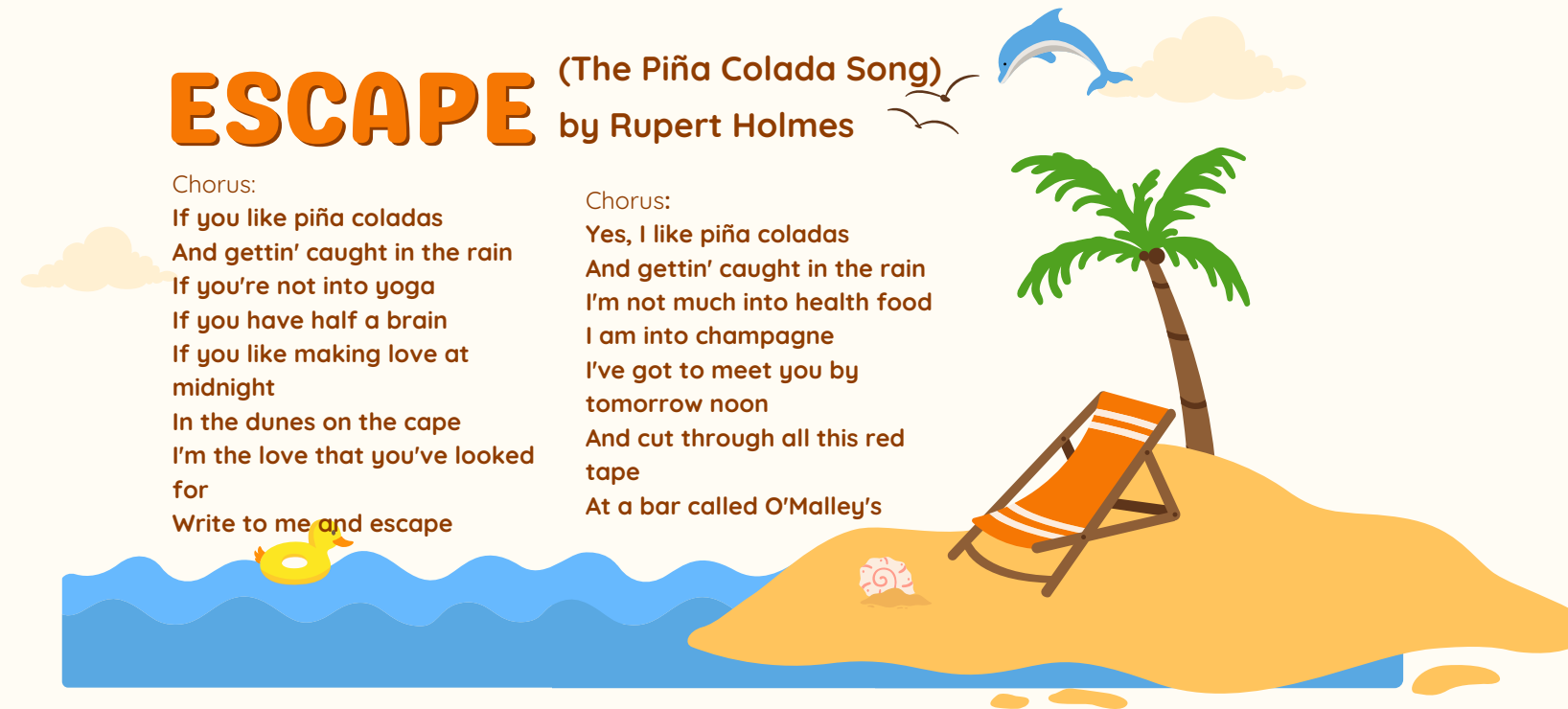
(The Piña Colada Song)
by Rupert Holmes

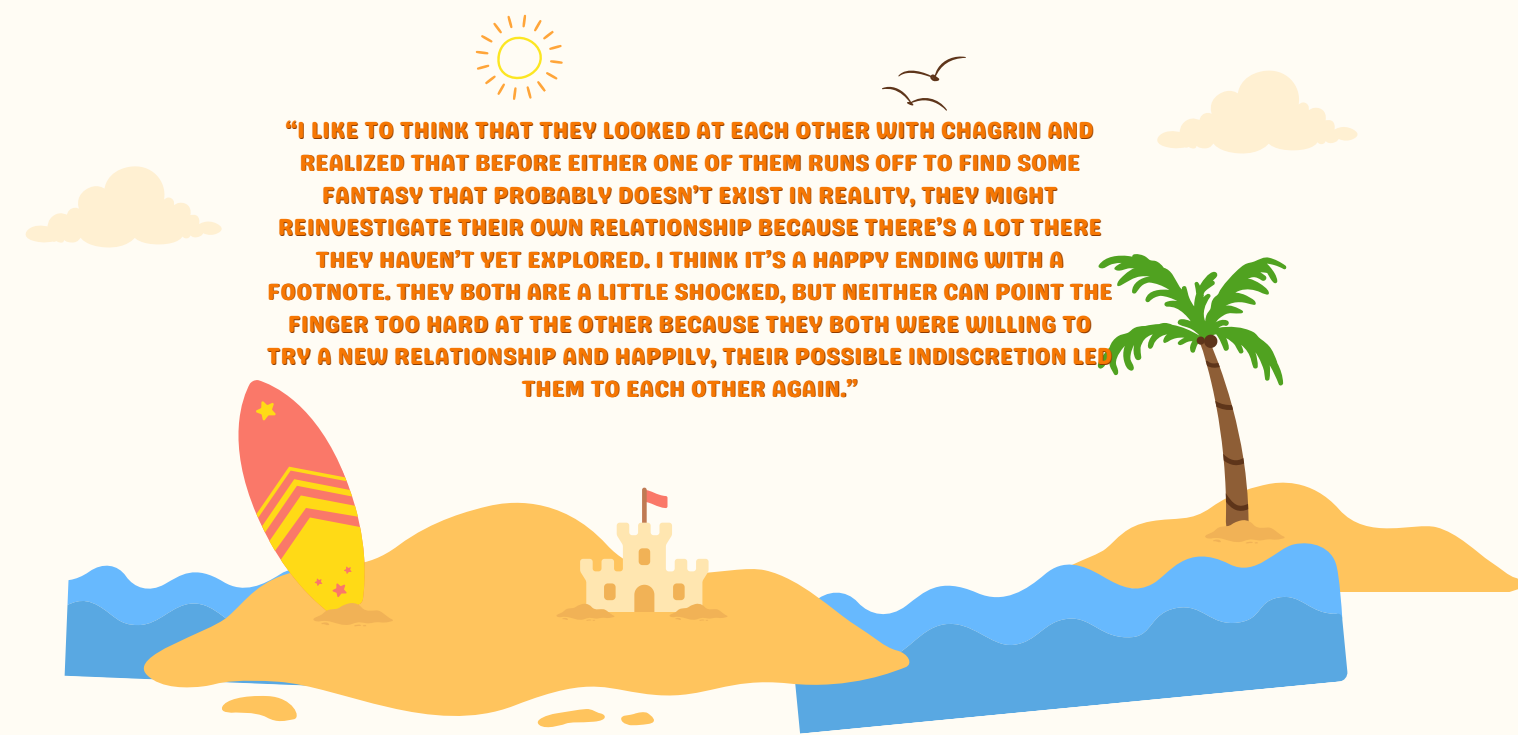
Chorus:

If you like piña coladas
And gettin' caught in the rain
If you're not into yoga
If you have half a brain
If you like making love at
midnight
In the dunes on the cape
I'm the love that you've looked
for
Write to me and escape

Chorus:

Yes, I like piña coladas
And gettin' caught in the rain
I'm not much into health food
I am into champagne
I've got to meet you by
tomorrow noon
And cut through all this red
tape
At a bar called O'Malley's





**“I LIKE TO THINK THAT THEY LOOKED AT EACH OTHER WITH CHAGRIN AND
REALIZED THAT BEFORE EITHER ONE OF THEM RUNS OFF TO FIND SOME
FANTASY THAT PROBABLY DOESN'T EXIST IN REALITY, THEY MIGHT
REINVESTIGATE THEIR OWN RELATIONSHIP BECAUSE THERE'S A LOT THERE
THEY HAVEN'T YET EXPLORED. I THINK IT'S A HAPPY ENDING WITH A
FOOTNOTE. THEY BOTH ARE A LITTLE SHOCKED, BUT NEITHER CAN POINT THE
FINGER TOO HARD AT THE OTHER BECAUSE THEY BOTH WERE WILLING TO
TRY A NEW RELATIONSHIP AND HAPPILY, THEIR POSSIBLE INDISCRETION LED
THEM TO EACH OTHER AGAIN.”**

TEARS IN HEAVEN

by Eric Clapton

- About the death of Eric Clapton's 4 year old son, Conor.
- He wrote this song while grieving for the soundtrack of "Rush" in 1991 with cowriter Will Jennings.
- This song is introduced in the play when Lorelai is talking about how Brody got her into soft rock and now she knows about Eric Clapton and Tears and Heaven. Brody calls Eric Clapton a "jizz stain."
- There is a very stark contrast in mood between this song and Escape



TEARS IN HEAVEN

by Eric Clapton

Verse 1:

Would you know my name?
If I saw you in heaven
Would it be the same?
If I saw you in heaven

Chorus:

I must be strong
And carry on
'Cause I know I don't belong
Here in heaven

Verse 2:

Would you hold my hand?
If I saw you in heaven
Would you help me stand?
If I saw you in heaven

Chorus:

I'll find my way
Through night and day
'Cause I know I just can't stay
Here in heaven



TEARS IN HEAVEN

by Eric Clapton

Bridge:

Time can bring you down
Time can bend your knees
Time can break your heart
Have you begging please
Begging please

Chorus:

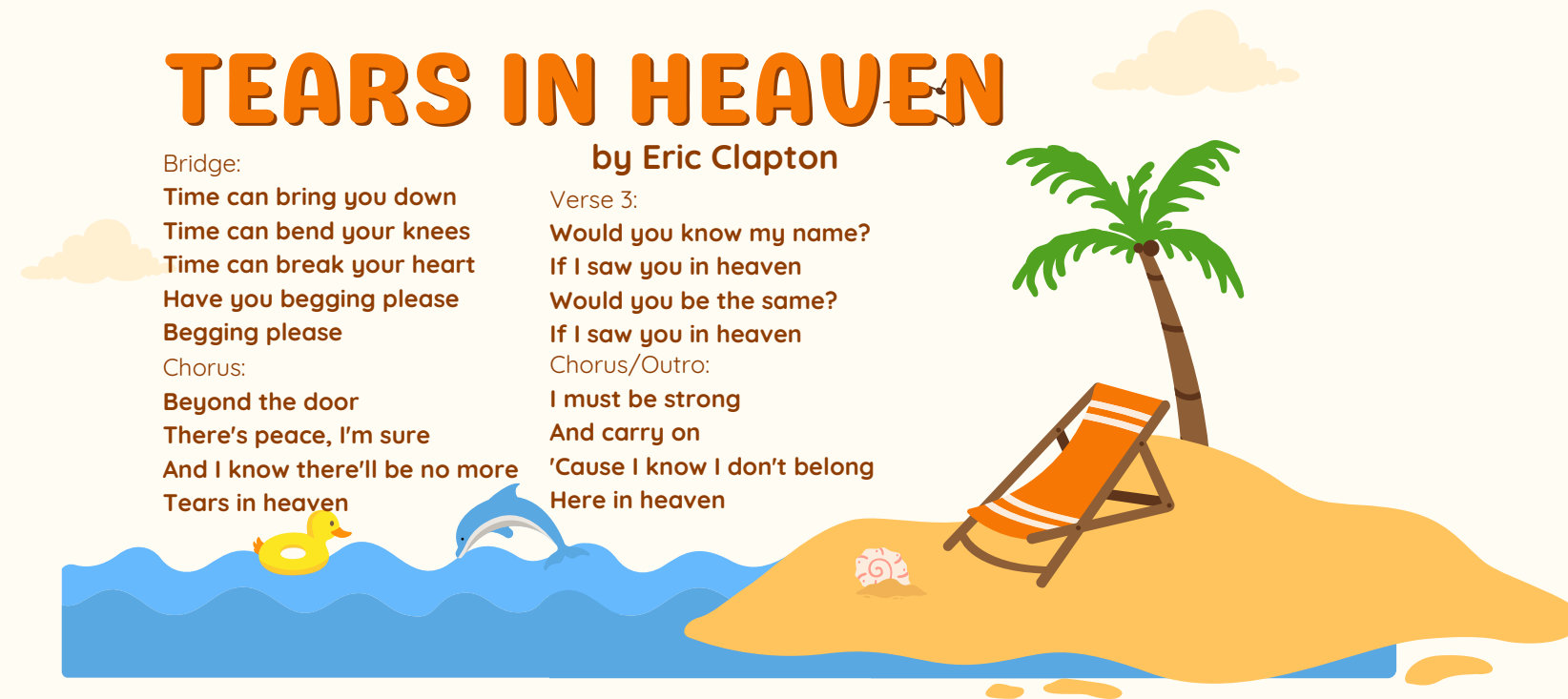
Beyond the door
There's peace, I'm sure
And I know there'll be no more
Tears in heaven

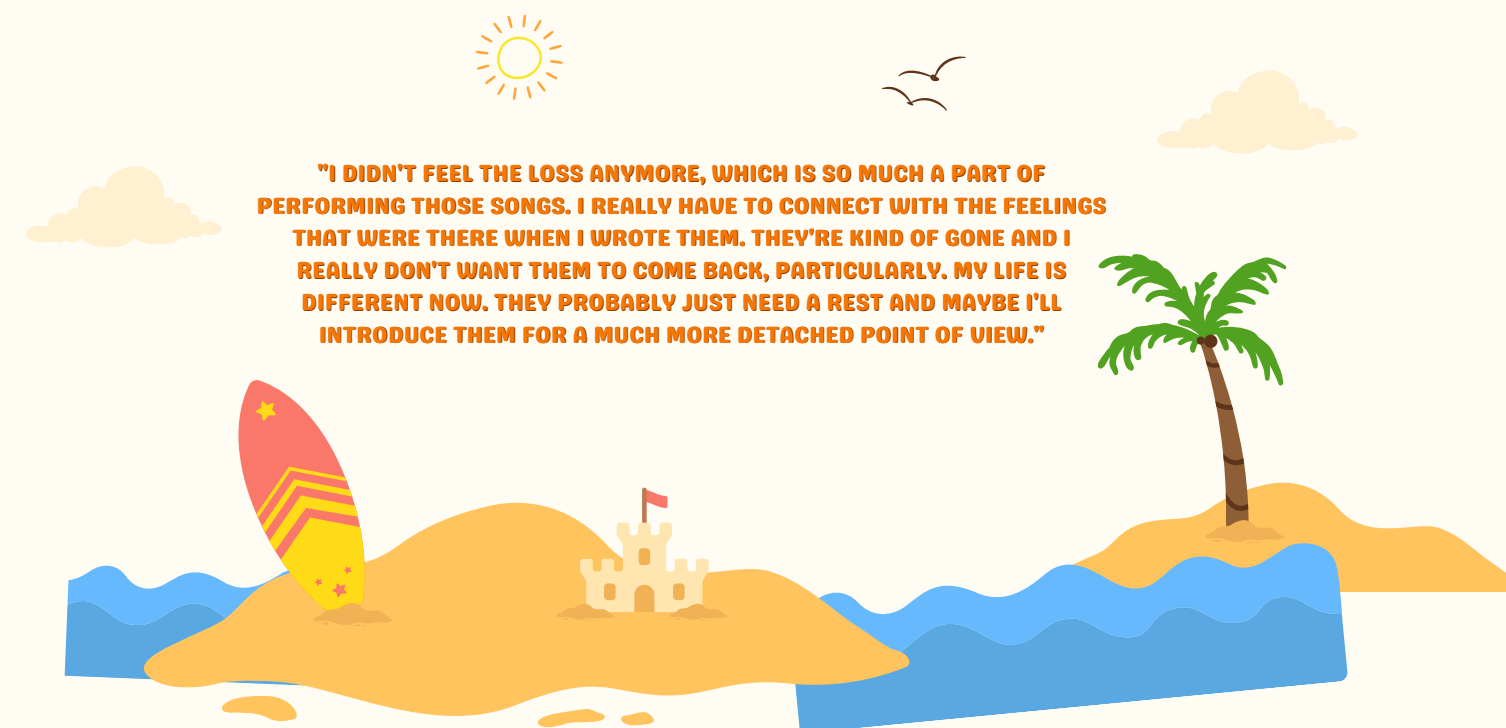
Verse 3:

Would you know my name?
If I saw you in heaven
Would you be the same?
If I saw you in heaven

Chorus/Outro:

I must be strong
And carry on
'Cause I know I don't belong
Here in heaven





"I DIDN'T FEEL THE LOSS ANYMORE, WHICH IS SO MUCH A PART OF PERFORMING THOSE SONGS. I REALLY HAVE TO CONNECT WITH THE FEELINGS THAT WERE THERE WHEN I WROTE THEM. THEY'RE KIND OF GONE AND I REALLY DON'T WANT THEM TO COME BACK, PARTICULARLY. MY LIFE IS DIFFERENT NOW. THEY PROBABLY JUST NEED A REST AND MAYBE I'LL INTRODUCE THEM FOR A MUCH MORE DETACHED POINT OF VIEW."



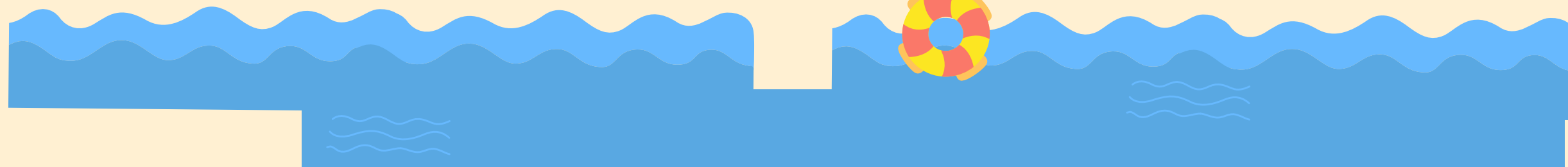
ADDICTION

The subject of addiction is very prevalent in this play through Brody and Lorelai. Brody is addicted to alcohol and Lorelai is addicted to weed.

- both of these characters use these substances to cope in their own situations



- Brody is trying to drown out his depressive thoughts, in particular with his grief of losing Jane
- Lorelai appears to use weed to lessen her anxiety when interacting with Brody





MENTAL HEALTH

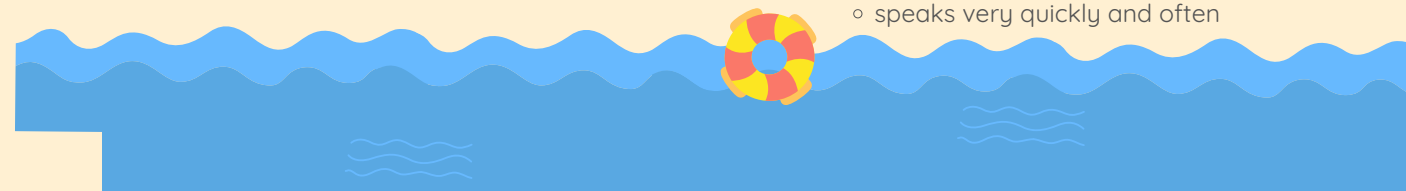


Another prevalent concept that this play revolves around the mental health of Brody and Lorelai.

- both of these characters have their own mental health conditions that inform the way that they act and cope with their grief.



- Brody struggles with depression, especially after losing his friend Jane
 - he displays a loss of interest in his friendship with Lorelai
 - sings sad and writes sad songs to deal with his emotions
- Lorelai struggles with anxiety which affects the way that she copes with the loss of her father.
 - constantly questions if Brody likes her when they talk
 - speaks very quickly and often



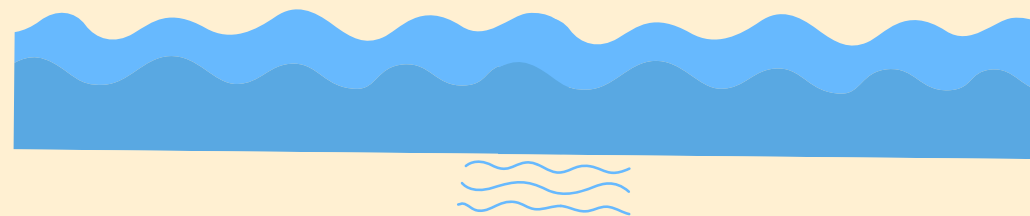


GRIEF



Grief is at the heart of this show even though it presents itself as a comedy.

- both of these characters are grieving in their own ways, influenced by their mental health and using addiction to cope.
- both characters employ many grieving tactics together, most prevalently trauma dumping.



- Brody lost his friend Jane
 - he feels guilty in the face of this loss and blames himself for her passing
 - he tries to run away from people and things he loves to punish himself (trash island)
- Lorelai lost her father
 - not afraid to bring him up
 - looks for him in the real world
 - expresses her feelings through crying





RESOURCES

1

Emerson Wellness Center

617-824-8666

2

Counseling and
Psychological Services

617-824-8595

3

Healing and Advocacy
Collective

617-824-8857

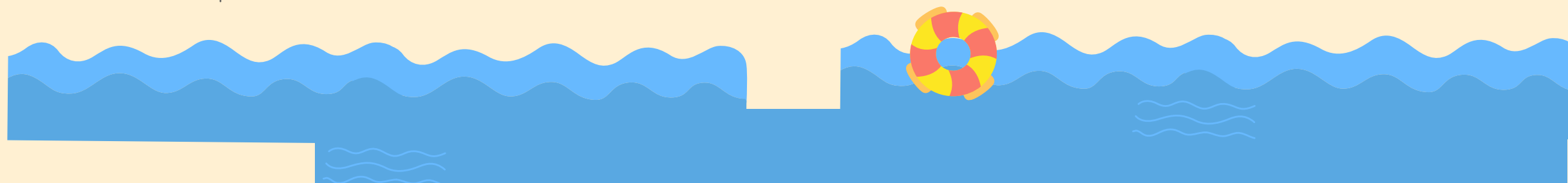


MARGARITAVILLE

- Originally a song written by Jimmy Buffet, Margaritaville is now an international sensation
- This song and brand really encapsulates the vibes of Escape which is why the venue, Margaritaville, seemed like the perfect location.

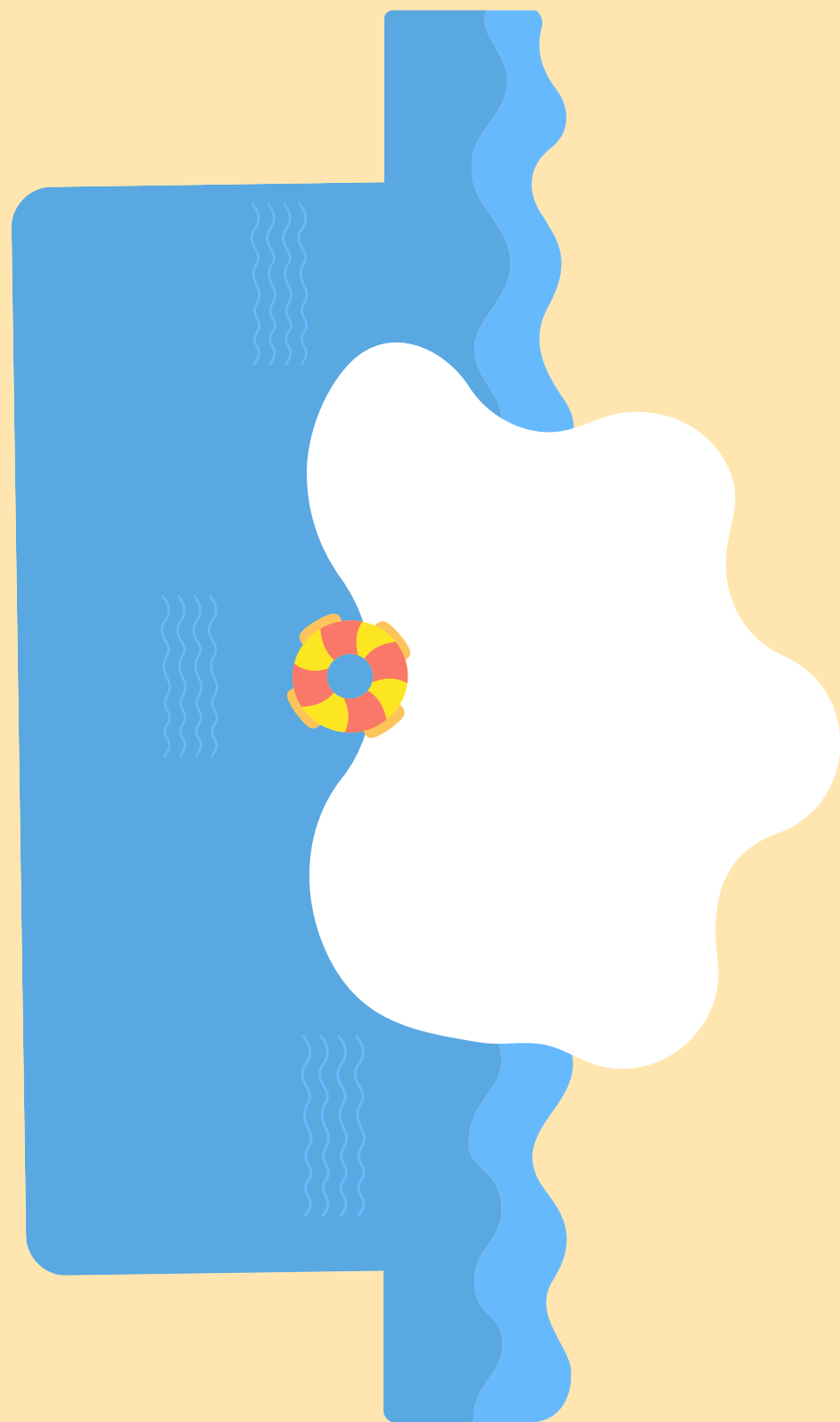


- There have also been other theatrical associations with Margaritaville, including the Broadway Musical: Escape (lol) to Margaritaville -- Jukebox musical based on the songs of Jimmy Buffett



QUESTIONS?





CONTACT ME



PHONE NUMBER

703.966.7331



EMAIL

susan_weinhardt@emerson.edu

